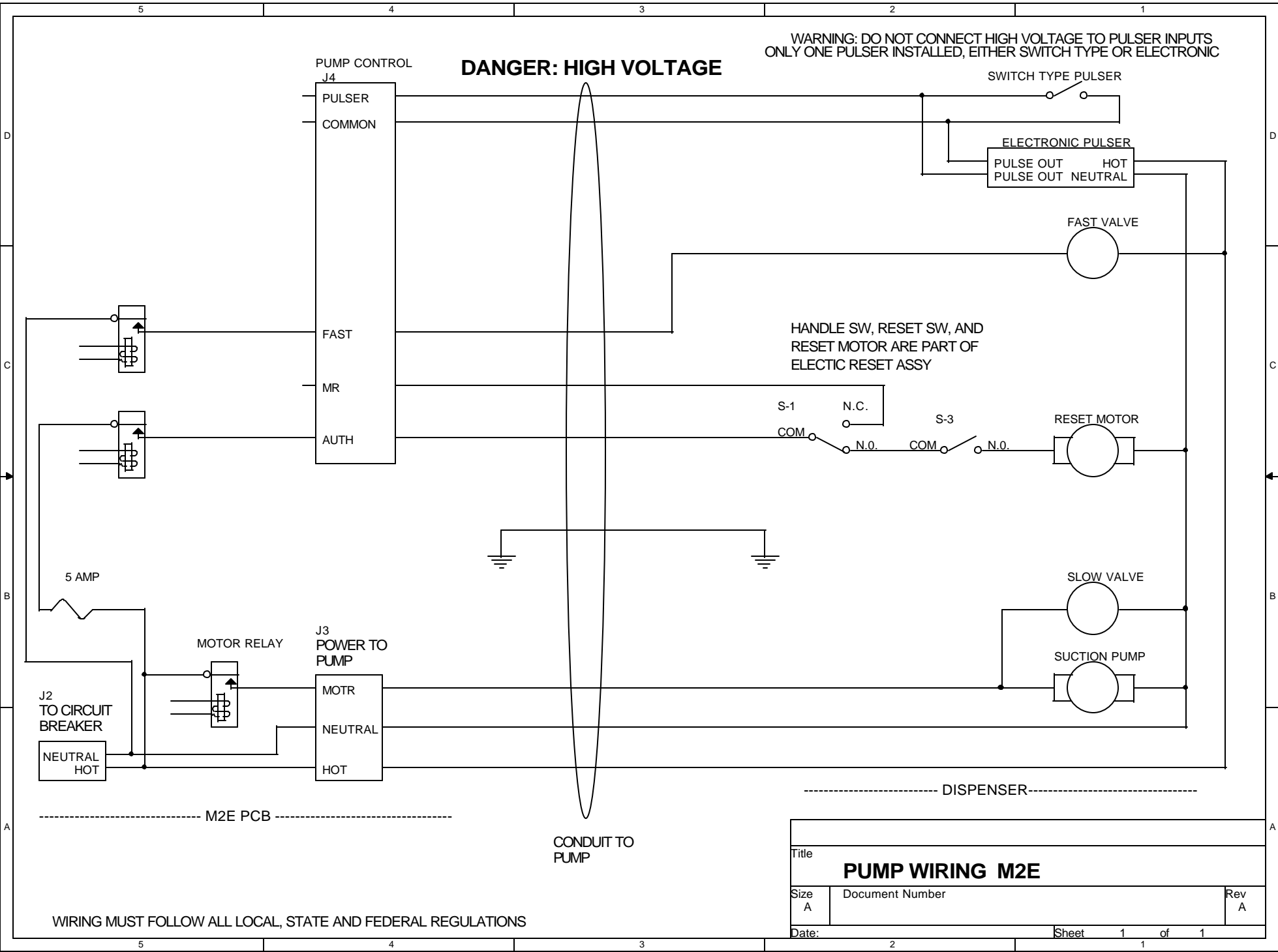


WARNING: DO NOT CONNECT HIGH VOLTAGE TO PULSER INPUTS  
 ONLY ONE PULSER INSTALLED, EITHER SWITCH TYPE OR ELECTRONIC

**DANGER: HIGH VOLTAGE**



WIRING MUST FOLLOW ALL LOCAL, STATE AND FEDERAL REGULATIONS

Title		
<b>PUMP WIRING M2E</b>		
Size A	Document Number	Rev A
Date:	Sheet	1 of 1

## M2E Rev A1 Dip Switch Settings

SW 4	SW 3	SW 2	SW 1	ADDRESS
OFF	OFF	OFF	OFF	Pump 1
OFF	OFF	OFF	ON	Pump 2
OFF	OFF	ON	OFF	Pump 3
OFF	OFF	ON	ON	Pump 4
OFF	ON	OFF	OFF	Pump 5
OFF	ON	OFF	ON	Pump 6
OFF	ON	ON	OFF	Pump 7
OFF	ON	ON	ON	Pump 8
ON	OFF	OFF	OFF	Pump 9
ON	OFF	OFF	ON	Pump 10
ON	OFF	ON	OFF	Pump 11
ON	OFF	ON	ON	Pump 12
ON	ON	OFF	OFF	Pump 13
ON	ON	OFF	ON	Pump 14
ON	ON	ON	OFF	Pump 15
ON	ON	ON	ON	Pump 16

SW 5 OFF for console operation, ON for standalone. (LED blinks fast)

SW 6 OFF for penny and 10x pulser, on for 100X pulser

SW 7 OFF for penny pulser and 100x pulser, ON for 10x pulser

SW 8 OFF for Gilbarco Protocol. On for Wayne Protocol

Default setting from factory: All switches off

To reset NVRAM clearing accumulated totals:

Power off

Turn all switches on

Power up for 2 seconds

Power off

Restore switches to original settings.